

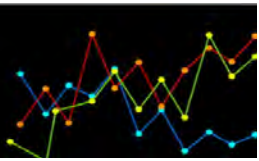


**TOMAX
NEWS**

Issue 06
22nd Oct 2020



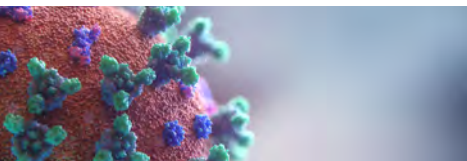
CONTENTS



03



04



05



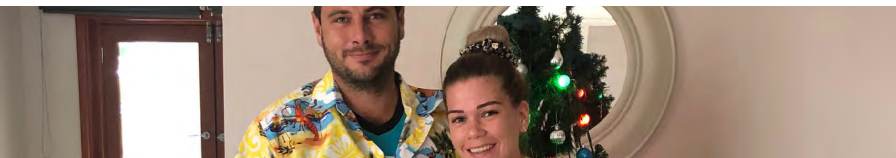
06



07



08



09



10



TOMAX

10

TOMAX CORPORATE MISSION

Our mission is to supply high quality, end-to-end supply chain solutions to our clients in a friendly, secure and supportive manner.



MARKET SUMMARY

- Industrial action is back and set to cause havoc in the port of Sydney yet again. Union members at the Hutchinson terminal in Port Botany will stop work for 24 hours commencing at 6:00am on Friday 23rd October. This disruption will cause further delays to shipping line schedules already heavily impacted by recent congestion and industrial action.
- Lines servicing the Asia-Australia trade lanes have announced rate increases set to be implemented not only from 1st November, but a further increase has now also been announced for 15th November in unprecedented action never seen before.
- Empty container park congestion in Sydney remains at serious levels with parks unable to accept any further de-hires, and importers being advised to de-hire containers in alternative ports (Melbourne or Brisbane) or hold containers at their own premises until de-hires can be accepted.
- A new container service for the port of Townsville in North Queensland is set to provide more options for cargo movements into the region. COSCO will begin a new fortnightly service in October with importers and exporters able to enjoy more regular shipping options and hopefully also a reduction in costs due to more competition.
- Several vessels have been heavily delayed over the last month arriving into the port of Brisbane due to COVID-19 cases detected on board. The Sofrana Surville, the ALS Kornos, and the Seamax Stratford all encountered delays of up to 14 days due to the requirements for isolation.



LATEST NEWS



OPPORTUNITIES ARISE FROM NEW COSCO SERVICE

As of today, international shipping line COSCO will commence a new fortnightly service with direct linkages between Townsville and destinations across China, the South Pacific and northern Australia.

The CAP (China/Australia/Pacific) service will create additional opportunities and boost the efficiency in northern Australia's mining, construction and retail industries. By covering the Port's most popular trading routes, the service will strengthen ties with Townsville's leading trade locations according to Drew Penny, the chief operating officer of the Port of Townsville. As a result of the additional services, a wave of benefits will surface including greater connectivity, highly efficient supply chains and cost-savings on general goods and a large range of project cargo.

Exports from Townsville to China largely consist of mineral concentrates and containerised refined metals. China to Townsville imports predominantly include a diverse range of general cargo such as containerised mining consumables, iron, solar panels, steel materials, furniture and household goods.

In addition to directly connecting Townsville to ports in Darwin, Yangpu,

Hong Kong, Port Moresby, Cebu and Lae, the service will also utilise its ports in China to establish links with supply chains across the world. Yangpu port will act as a tranship hub for cargo between Townsville and north east Asia, south east Asia and south Asia, whilst Hong Kong will be the tranship hub for the rest of the world.

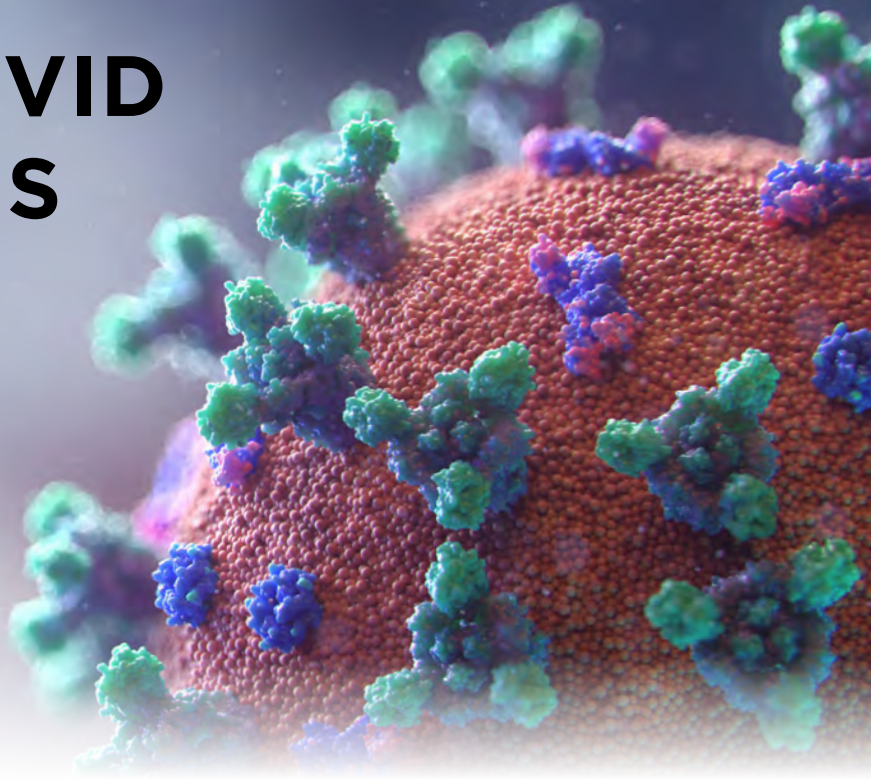
In light of the recent construction of a container and cargo terminal at Berth 4, the new service is considered perfectly timed for the Port of Townsville.

"Since 2016, the Port of Townsville has invested more than \$70m to upgrade the wharf on Berth 4 and construct the new terminal, effectively doubling the berth's container handling capacity," Mr Penny explains, "it is encouraging to see the opportunities for growth in containerised cargo flowing with this new service."

COSCO now joins ANL Container Line, PAE Mariana and Swire Shipping in creating direct linkages between north Queensland the rest of the world.

Reference: Wallace, P. (2020). New Cosco Service Delivers Opportunities for the North. Retrieved from https://www.thedcn.com.au/new-cosco-service-delivers-opportunities-for-the-north/?utm_source=DCN+Daily+Newswire&utm_campaign=139a0e6-EMAIL_CAMPAIGN_9_8_2020_COPY_504&utm_medium=email&utm_term=0_505d67c448-139a0e6-143548541 on 20th October, 2020

VICTORIA COVID RESTRICTIONS UPDATE



Premier Daniel Andrews' announcement on the 18th of October shed light on the easing of restrictions in specific areas, stages and dates. Here is a summary of Victoria's roadmap to reopening:

Melbourne Metropolitan region- NOW

- Removal on time limit for exercise or social gathering
- Extension of travel radius from 5km to 25km of your home
- Outdoor gatherings of 10 people from 2 households
- Tennis, skate parks, golf, and hairdressers will also re-open
- Outdoor pools to host up to 30 swimmers
- Full return of allied health services
- Non-essential outdoor home maintenance repairs and renovations to reopen
- Automated car washing to reopen
- Mobile or home pet grooming to reopen
- Outdoor photography to reopen
- Real estate auctions, both residential and commercial with a limit of 10 people are permitted.

From 11.59pm Sunday 1st of November:

- The four reasons to leave home will be removed
- A maximum of two people plus dependence, once-a-day, will be able to visit homes
- Retail will re-open
- Hospitality - 20 people inside and 50 people outside to reopen
- Beauty and personal services to reopen
- Sport for under 18s to recommence

Regional Victoria - NOW

- Hospitality 70 people outside and 40 people inside
- Outdoor religious gatherings to 20 people
- Indoor pools will open for under 18s and max of 20
- Libraries, max of 20 people

From 11:59pm Sunday 1st November

- Will be allowed non-contact indoor sport for under 18s, including dance classes

For more information, visit <https://www.dhhs.vic.gov.au/coronavirus>

NEW CAIRNS SERVICE CANCELLED DUE TO BAD VESSEL & NASTY OWNER



Anthony Wolfe, the owner of a vessel planned to be utilised on a new service between Cairns and Papua New Guinea, has been slapped with a \$750 fine after engaging in an explosive tirade against an AMSA (Australian Maritime Safety Authority) inspector.

Upon inspection, AMSA described the MV Wallaroo as an unseaworthy, ex-navy tug boat due to its serious deficiencies with watertight hatches, outdated firefighting equipment and an absence of a life raft on vessel. At the time of the incident, Wolfe's plan for the vessel was to transport shipping containers from Cairns to Papua New Guinea. However, the ship's unseaworthiness has resulted in its detainment under the Navigation Act.

During the inspection, Wolfe displayed aggression towards the AMSA inspector, forcing him off the vessel. His tirade included hindering him from completing the course of his duties, according to the AMSA.

Mr Wolfe was found guilty of hindering a Commonwealth public official, in Cairns Magistrates Court this week and

faces a \$750 fine on top of a conviction recorded on his criminal record for the next decade.

AMSA's General Manager, Allan Schwartz stated that the AMSA staff and Australian community will not tolerate any form of threat or violent behaviour. "Our inspectors work every day to make the seas a safer place to work and to protect Australia's precious marine environments from the impacts of shipping and unseaworthy vessels like Wallaroo," Mr Schwartz said, "Our inspectors serve the Australian community, in particular the coastal towns and tourism hubs like Cairns which depend on the sea for their livelihoods."

As a consequence, the anticipated Cairns to Papua New Guinea line will no longer be operating.

Reference: Sexton, D. (2020). Vessel Owner Fined Following Expletive Tirade. Retrieved from https://www.thedcn.com.au/vessel-owner-fined-following-expletive-laden-tirade/?utm_source=DCN+Daily+Newswire&utm_campaign=139a0eeee6-EMAIL_CAMPAIGN_9_8_2020_COPY_504&utm_medium=email&utm_term=0_505d67c448-139a0eeee6-143548541 on 20th October, 2020.

TOMAX CONSULTANCY SERVICES



Tomax has licensed brokers working in our Melbourne head office along with experts in Industry Assistance. We not only classify, compile and lodge customs entries, but offer services in tariff advices, tariff concessions, and special project schemes as well. We have specialist industry consultants working with us who can offer advice relating to anything from the automotive industry, TCF industry, or billion dollar project work.

Our in-house industry assistance experts can help you in many areas to do with import and exporting. The team are very experienced in the preparation and lodgement of claims and government assistance applications such as ATS and EMDG. We can also get you registered for TRADEX and the Trusted Trader Program.

Over recent years the Australian Border Force have been increasing the investigations into the use of Tariff Concessions on imported goods. It is now vital that the use of a TCO on entries is coupled with a Tariff Advice confirming the TCO applies to the goods. The Tomax Industry Assistance team have over 50 years of experience in preparing and lodging both Tariff Advice applications as well as the complex Tariff Concession Order applications.

For more information please contact Paul Watson and our consultancy team on 1300 186 629 or by email to paul@tomax.com.au.

QUOTE OF THE WEEK

“The ships are 100% full. The containers are 100% full. You can’t get a container built. You can’t pick up a ship from the spot market. The whole container-shipping cycle is at absolutely full pulse.”

Jeremy Nixon, CEO of Ocean Network Express (ONE), the world’s 6th largest container line.





QUEENSLAND SHIP CARRIES NEW COVID STRAIN

A container ship was prevented from docking in Brisbane after fears the ship carried a never seen before Covid-19 strain.

The 'Sofrana Surville' is off the Sunshine Coast on Tuesday and the entire crew will undergo mass testing by Queensland health. The warning came from the New Zealand government, after an engineer onboard the 'Ken Rei' ship tested positive off Napier. New Zealand authorities speculate the engineer contracted the disease whilst on the 'Sofrana Surville', while he was on board in Auckland between October 12th and 13th.

On October 13th, the ship boarded more crew members from The Philippines and set sail around the Pacific Ocean on route to Brisbane. However, Queensland Health was alerted regarding the prospect of the crew members' exposure to the virus, before the ship arrived to Brisbane.

"No one has left the boat and no one will leave the boat until Queensland Health Officials give the all-clear around testing results," states David Littleproud, Federal Agriculture Minister, "we are proud to say that we worked collaboratively with New Zealand and subsequently with Queensland Health to make sure that

we've not only protected the crew on this boat, but every Australian."

Maritime Safety Queensland stipulates that the community was not placed at risk by the arrival of the ship as a result of their tight protocols, strict interrogation and comprehensive management of ships which enter Queensland.



Pictured: The 'Sofrana Surville' Ship.

Barnsley, W. (2020). Ship Off Queensland coast feared to be carrying 'never before seen' strain of Covid. Retrieved from <https://7news.com.au/lifestyle/health-wellbeing/ship-off-queensland-coast-feared-to-be-carrying-never-before-seen-strain-of-covid-c-1422900> on 21st October, 2020.

STAFF SPOTLIGHT

MEET CHELSEY HOMES KEY ACCOUNT MANAGER TOMAX LOGISTICS



Q: WHAT IS YOUR ROLE AT TOMAX?

I am the Key Account Manager at our Tomax Brisbane facility.

Q: DESCRIBE YOUR IDEAL WEEKEND.

Unwinding by going on an outdoor camp with my partner in our 4WD - with the grandparents minding the kids of course!

Q: DO YOU HAVE ANY ROLE MODELS/IDOLS?

My parents are my biggest role models as they are always there for me.

Q: A GENIE HAS GRANTED YOU ONE WISH! WHAT WILL YOU WISH FOR?

I would wish for World Peace.

Q: YOUR FAVOURITE CUISINE AND WHY?

Definitely Italian - anything with pasta!



THURSDAY FUNNIES

We hope these jokes can brighten up your mood as we approach the AFL Grand Final weekend!

Why did the scarecrow get promoted?

Because he was outstanding in his field.

I bought the world's worst thesaurus yesterday.

Not only is it terrible, it's terrible.

What do you call someone who doesn't like carbs?

Lack-Toast Intolerant.

My wife and I laugh about how competitive we are. But I laugh more.

Why does a Chicken Coop only have 2 doors?

Because if it had 4, it'd be a Chicken Sedan!

Why did the woman go on a date with a mushroom?

Because he was a fun-gi.

I told my doctor that I broke my arm in two places.

He told me to stop going to those places.



TOMAX

tomax.com.au

1300 186 629

03 9544 4227



Australian HQ
19/202 Ferntree Gully Road
Clayton VIC 3168